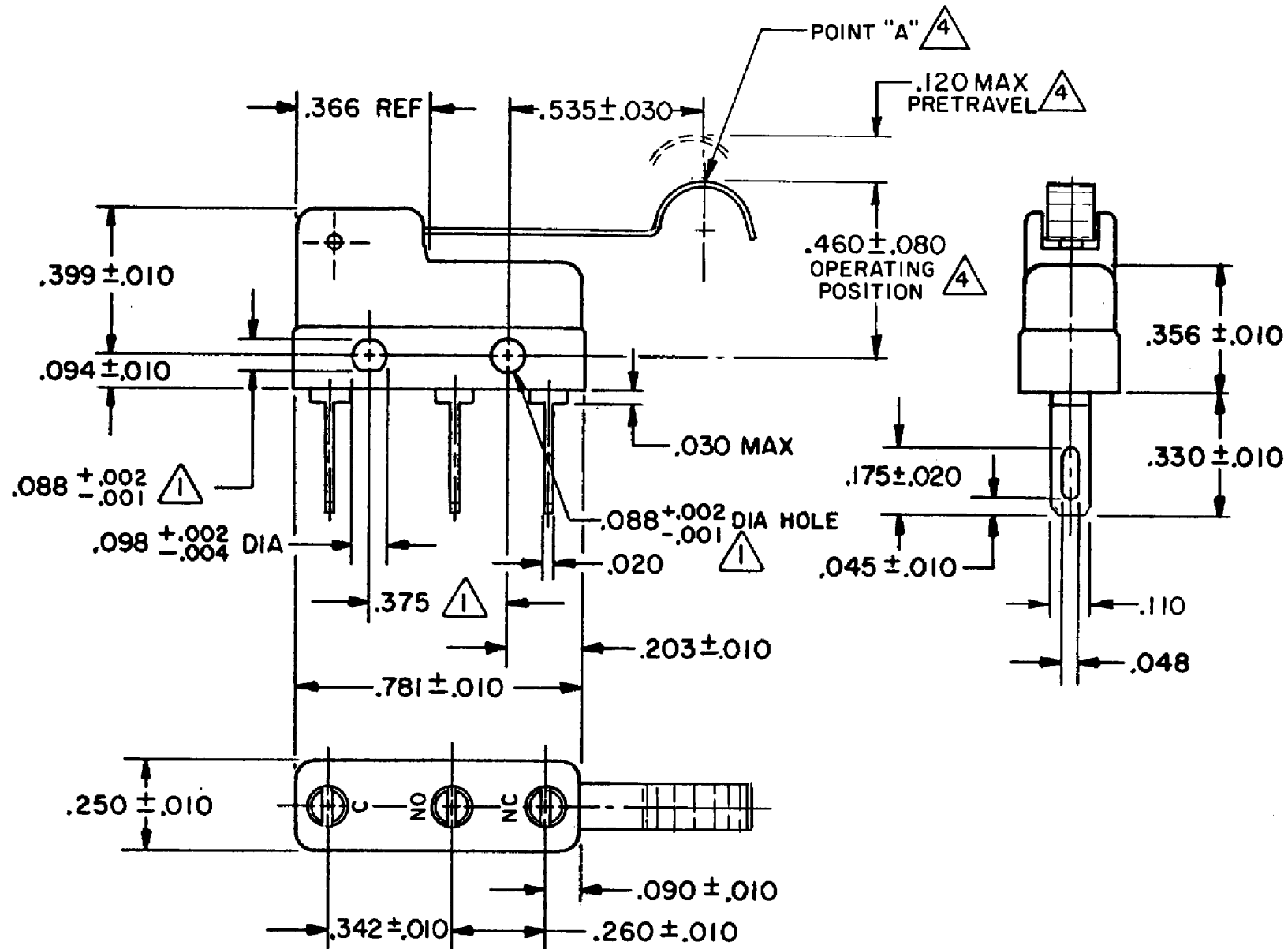
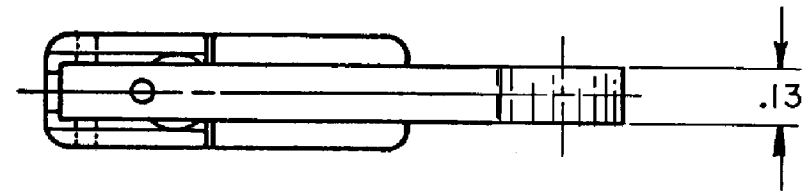


HONEYWELL PART NUMBER
311SM605-H4
PRODUCT CODE TZA2751

REV	DOCUMENT	CHANGED BY	CHECK
5	0038114	KVS 03JUN08	ASD



NOTES

- 1 MOUNTING HOLES WILL ACCEPT PINS OR SCREWS OF .087 MAX DIA ON .375 ± .002 CENTERS
- 2 - TERMINALS ARE PLATED FOR SOLDERING
- 3 - SWITCH WILL WITHSTAND TEMPERATURE OF 250° F
- 4 CHARACTERISTICS TAKEN AT POINT "A"

RELEASE NO.	PR - 5499
REPLACES	-

CHARACTERISTICS	4
OPERATING FORCE	30 GRAM MAX
RELEASE FORCE	5 GRAM MIN
DIFFERENTIAL TRAVEL	.027 MAX
OVERTRAVEL	.026 MIN

ELECTRICAL DATA	
CONTACT ARRANGEMENT SPDT	
30 VOLTS DC RATING	
	SEA LEVEL 50,000 FT
INDUCTIVE	3 AMP 2.5 AMP
RESISTIVE	5 AMP 5 AMP
MAXIMUM INRUSH 24 AMP	
APPROVALS	KEMA, CE 5A, 250V ~ T85 1E4 UL, CSA 5A, 250 VAC

DESIGN UNITS: INCH
TOLERANCES UNLESS NOTED:
NO PLACE X ±
ONE PLACE .X ±
TWO PLACE .XX ±
THREE PLACE .XXX ±
FOUR PLACE .XXXX ±
ANGLES ±
THIRD ANGLE PROJECTION

DRAWN	VK	12 NOV 07
CHECK	RJ	12 NOV 07
THIS DRAWING COVERS A PROPRIETARY ITEM AND IS THE PROPERTY OF HONEYWELL. THIS DRAWING IS NOT TO BE COPIED OR USED WITHOUT THE PERMISSION OF HONEYWELL.		
INTERPRET PER ANSI Y14.5M-1982 OTHER HONEYWELL ENGINEERING STANDARDS MAY APPLY		

Honeywell			
TITLE SWITCH - BASIC			
SIZE	TYPE	DRAWING NAME	REV
B	I	311SM605-H4	5
SCALE	-	WEIGHT .006 LB MAX	SHEET 1 OF 1